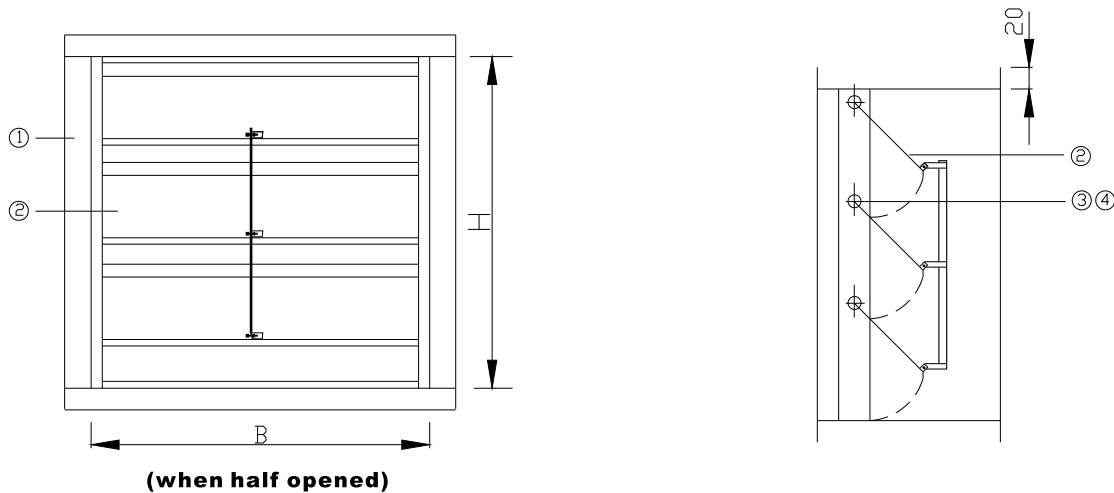




NON RETURN DAMPER



APPLICATION

Non Return Damper is primarily used as air operated opening or closing dampers for intake, discharge and pressure relief vents in air conditioning systems.

CONSTRUCTION

- ❶ Casing: 1.0 mm thick galvanised sheet steel or Stainless Steel
- ❷ Blades: 0.5 -0.8 mm thick aluminium sheet
- ❸ Blade Shafts: steel
- ❹ Bearing: brass

STANDARD SIZES

B in mm	H in mm	Number of blades
200	345	3
400	675	6
600	1005	8
800	1335	11
1000	1665	14
1200	1995	16

Any combination of dimensions B xH listed above can be supplied.

Minimum: 100 x 100 x 150
Maximum: 2440 x 2440 x 150

